

High - Current Disconnectors

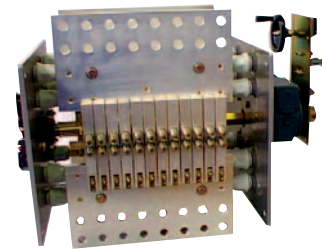
NOR Range

1500 V DC - 4000 to 64000 A

Single Pole / Double Pole

Copper Terminals

- Low and constant voltage drop
- Very compact design
- High short - circuit current withstand
- Large insulation and creepage distances
- Easy connections to Copper busbars by bolting
- Large customization possible with:
 - Actuators (motor, pneumatic, manual)
 - Auxiliaries (limit switches, locks, control boxes)
 - Dimensions fitting



Main technical characteristics

Electrical Data

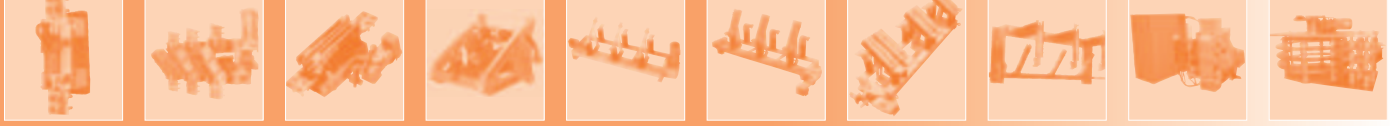
- Temperature rise at nominal current (with 40°C max. Ambient temperature) less than : 65°C
- Typical temperature rise at nominal current (with 40°C max.) : 15°C above busbars
- Typical Voltage drop at nominal current : 30 mV
- Peak short-circuit current withstand (upon circuit configuration)
 - In one pole configuration : 10 x (Nominal current)
 - In two poles configuration : 5 x (nominal current)
- Dielectric withstand strength
 - Between live parts in open position : 10 kV - 50 Hz - 1 min
 - Between live parts and earth : 10 kV - 50 Hz - 1 min
 - Between auxiliary contacts and earth : 2.5 kV - 50 Hz - 1 min
 - Between motor and earth : 2 kV - 50 Hz - 1 min
- SCR leakage current breaking capacity (upon request) : 1 A - 100 V DC
- Power breaking capacity up to 100 kA - 100 V DC - L/R < 20 msec : Upon request

Mechanical Data

- Mechanical endurance (with respect to maintenance instructions). : 20 000 Cycles
- Typical duration of opening or dosing operation
 - With motor operation : 3 to 12 seconds
 - With pneumatic operation : Less than 1 second
- Ponctual temperature withstand without equipment damages. : 140°C

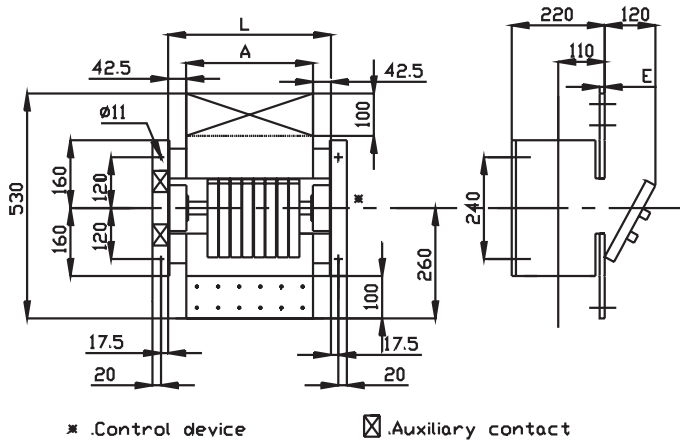
Technology

- Visible break by direct seeing of the mobile silver-plated copper contacts
- Mechanically independant mobile contact arms with high-pressure springs
- Electrical contact with silver to silver contact
- Insulation with Fiberglass reinforced polyester insulators
- Operation mechanism by a toggle closed system
- Mechanism of bichromate galvanized steel
- Disconnectors are self-supporting - Busbars support must be sized to withstand the disonnector additional weight
- For change-over design, please refer to our datasheet reference
- Upon request, possible association of two devices on the same drive



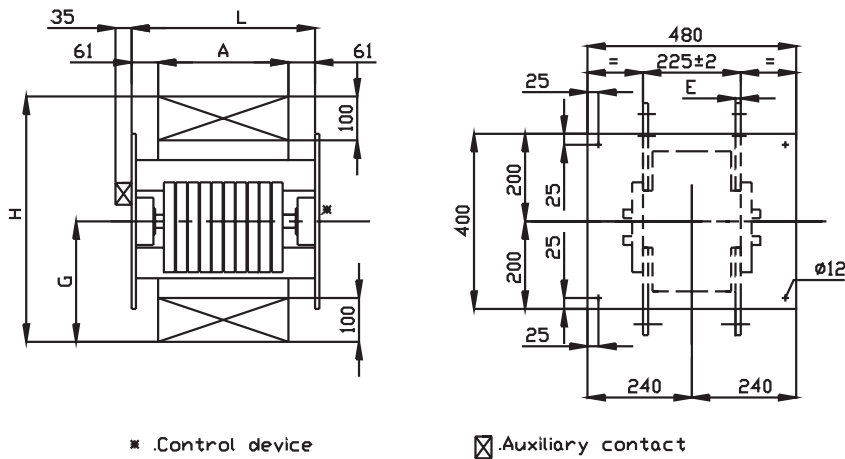
Main dimensions NOR 4000 to 64000 A

Figure 1

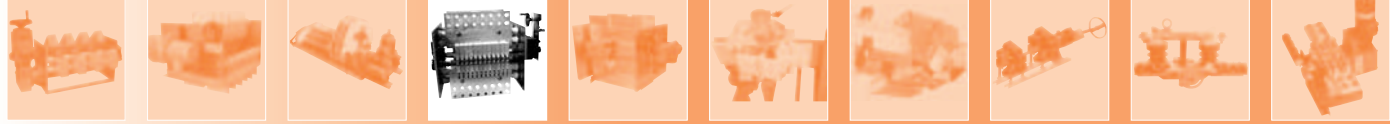


Dimensions mm	Current Rating kA					
	4	6	8	10	12.5	16
A	150	250	300	350	400	450
E	15	15	15	15	15	20
L	235	335	385	435	485	535
Driving	Weight kg					
Manual Handle	24	36	52	62	75	92
Geared motor	27	39	57	67	80	97

Figure 2

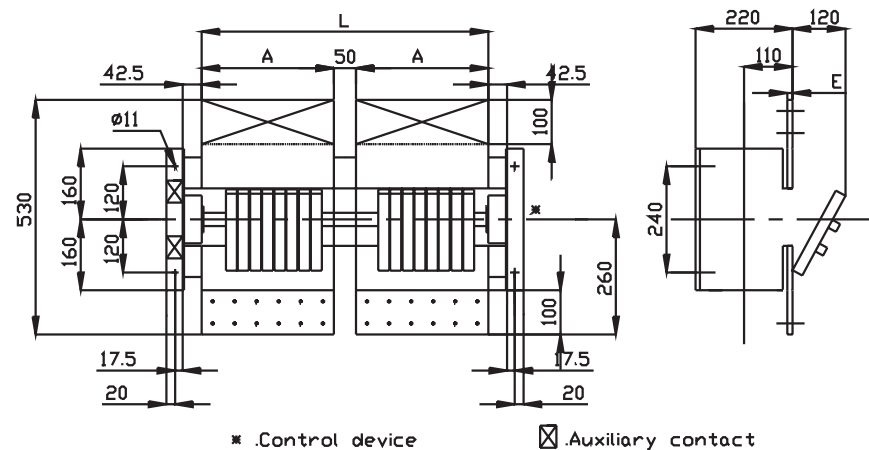


Dimensions mm	Current Rating kA												
	8	10	12	16	20	25	32	35	40	45	48	56	65
A	150	200	250	300	350	400	450	500	550	600	700	850	950
E	15	15	15	15	15	15	20	20	20	20	20	20	20
G	280	280	280	280	280	280	280	280	280	280	280	280	280
H	570	570	570	570	570	570	570	570	570	570	570	570	570
L	272	322	372	422	472	522	572	622	672	722	822	972	1072
Driving	Weight kg												
Manual Handle	55	65	80	95	115	140	180	195	215	235	275	310	345
Geared motor	60	70	85	100	120	145	190	205	225	245	285	325	360



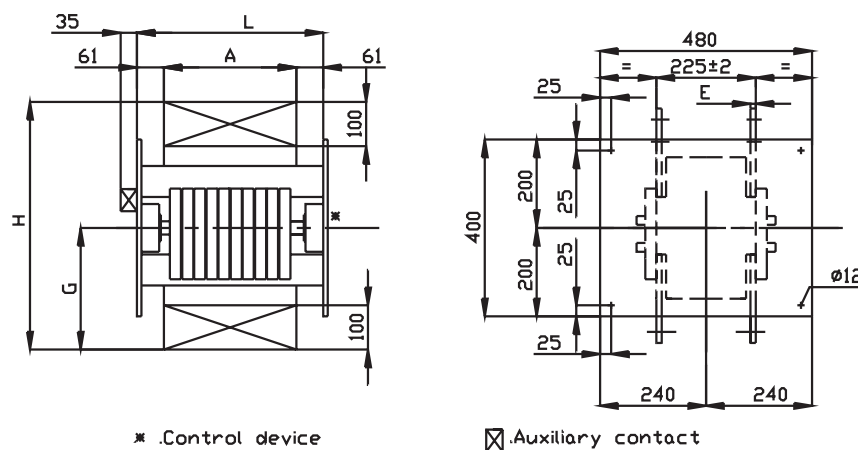
Main dimensions NOR 4000 to 64000 A

Figure 3

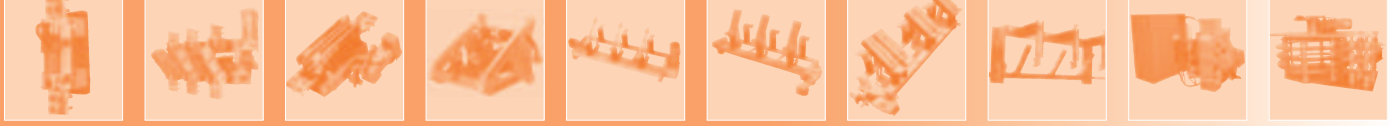


Dimensions mm	Current Rating kA		
	4	6	8
A	150	250	300
E	15	15	15
L	435	635	735
Driving	Weight kg		
Manual Handle	45	70	95
Geared motor	48	70	100

Figure 4



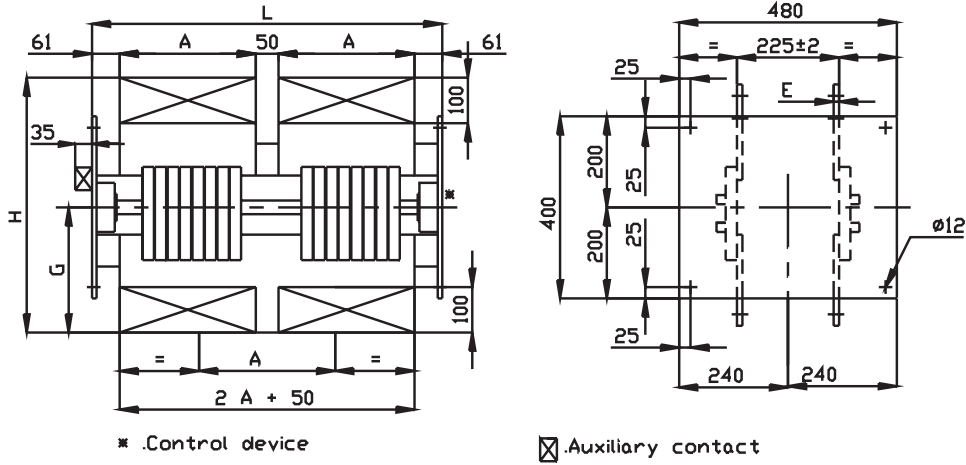
Dimensions mm	Current Rating kA											
	4	6	8	10	12.5	16	18	20	22	25	28	32
A	150	250	300	350	400	450	500	550	600	700	850	950
E	15	15	15	15	15	20	20	20	20	20	20	20
G	280	280	280	280	280	280	280	280	280	280	280	280
H	570	570	570	570	570	570	570	570	570	570	570	570
L	272	372	422	472	522	572	622	672	722	822	972	1072
Driving	Weight kg											
Manual Handle	55	80	95	115	140	180	195	215	235	275	310	345
Geared motor	60	85	100	120	145	190	205	225	245	285	325	360



Main dimensions

NOR 4000 to 64000 A

Figure 5



Dimensions mm	Current Rating kA						
	8	10	12	16	20	25	32
A	150	200	250	300	350	400	450
E	15	15	15	15	15	15	20
G	280	280	280	280	280	280	280
H	570	570	570	570	570	570	570
L	472	572	672	772	872	972	1072
Driving	Weight kg						
Manual Handle	95	115	135	175	215	265	335
Geared motor	100	120	140	180	220	275	345

