



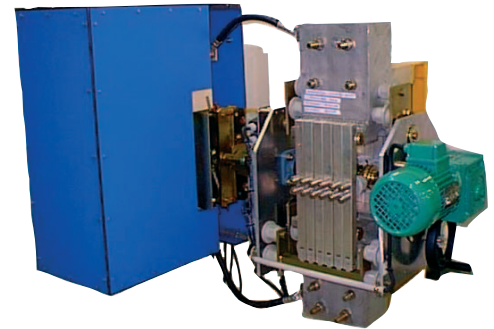
HIGH-POWER Switchgear Division FOULLERET Product range

DBM TYPE

DC Loadbreak Switches

13.5, 18, 20 kA - 1500 V DC

- Load Make and Break
- Deformable
- True opening distance
- Modular design
- Self - cleaning
- Copper and / or Aluminium construction

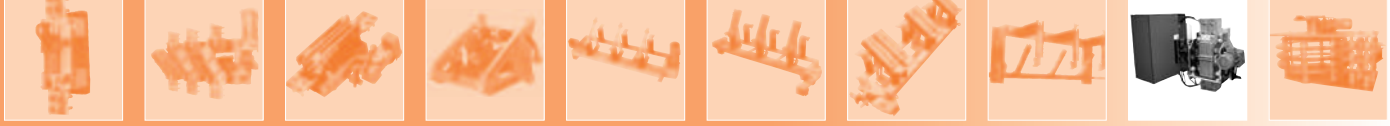


Electrical Characteristics

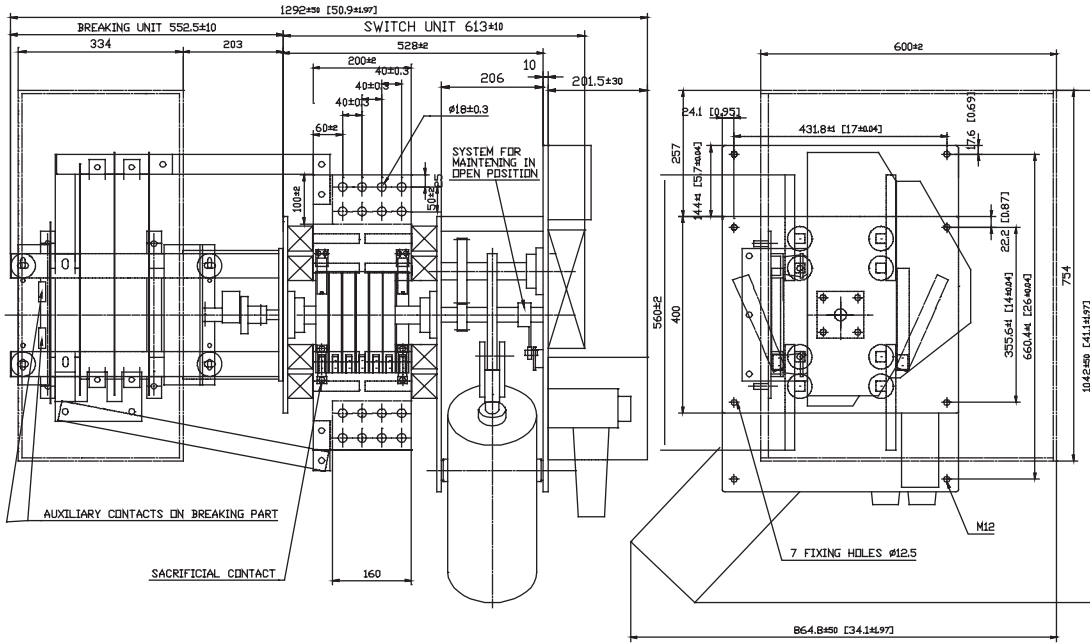
Rated thermal current		RMS 1 sec short-time withstand current	Rated peak current
AC (A)	DC (A)		
400	400	20	50
630	630	20	50
1000	1250	40	100
1600	1900	52	130
2000	2400	63	160
3150	3750	71	177
4000	5300	71	177
6300	7500	81	214

Dielectric withstand voltage 1 min/50 Hz		Rated impulse withstand voltage BIL	
Phase to earth (kA)	Across the isolating distance (kA)	Phase to earth (kA)	Across the isolating distance (kA)
10	12	40	46

- No-load operation
- Indoor type – only vertical mounting
- Mechanical endurance: $\leq 1\text{ kA} = 25\ 000$ cycles; $>1\text{ kA} = 50\ 000$ cycles (open / close)
- Maximum temperature withstand at 130° C without damages to the switch
- Electrical contact by contact knives with pressed on hard silver contact rivets and silver-plated electrolytic copper plates
- Supporting insulators made of cast epoxy resin (fire classification according to UL94-V1)



DBM 13.5 kA



DBM 20 kA

